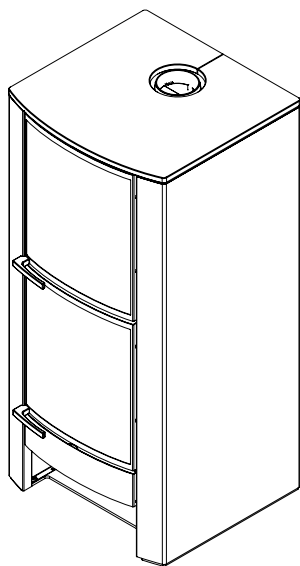


ZK60F**THERMO-STOVES**

mm 680x660xh1450

CE EN -13240 certification



ZK60F

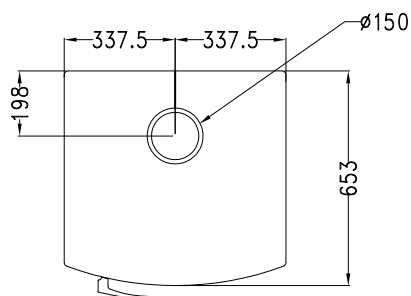
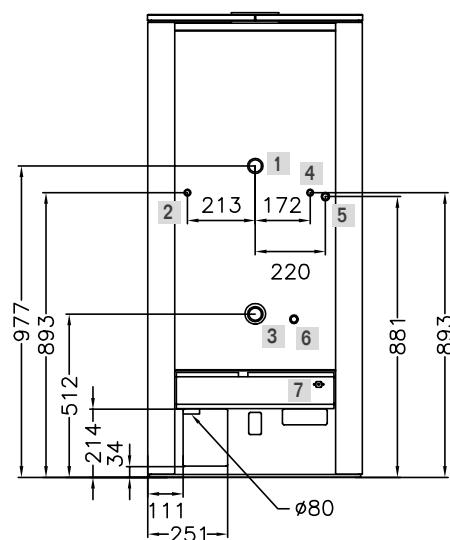
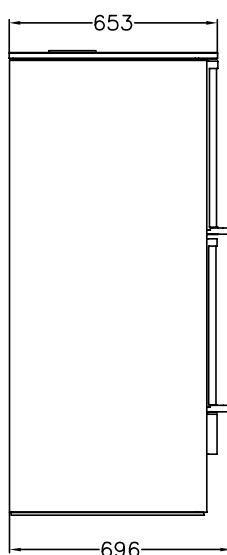
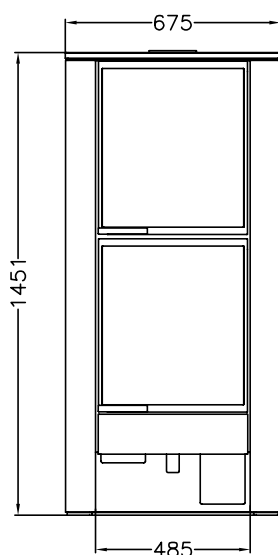
Black

STANDARD EQUIPMENT

- above flue \varnothing 150 mm
- safety heat exhaust outfitted for connection to a close circuit
- oven of mm 350x520xh240
- oven features: 1 grid + 1 baking pan
- pump thermostat
- primary air thermostatic regulation

BY REQUEST:

- external flue air



- 1 Out connection 1"1/4 female
- 2 Connection for thermal outflow circuit 1/2" male
- 3 In connection 1"1/4 female
- 4 Connection for thermal outflow tube 1/2" female
- 5 Connection for thermal outflow circuit 1/2" male
- 6 Boiler exhaust 1/2" female
- 7 Pump thermostat

DATA SHEET

Nominal heat output (max): 19.5 (26.5) kw

Mean content of CO to 13% O₂: 0.06 %

Maximum operating pressure: 1.5 bar

Firebox capacity: 83 Lt

Mean flue gas temperature: 257 °C

Flue depression: mbar 0.12

Nominal water heat output (max): 16.5 (20.5) kw

Efficiency: 80 %

Boiler capacity: 26.5 Lt

Fill opening (LxH): 35x25 cm

Flue gas mass flow: 17.6 g/s

Net weight/packaging included: kg 320/340